



UG - UG ALU G1.6-G2.5-G4

RESIDENTIAL ALUMINIUM
AND STEEL BODY GAS METER

UG - UG ALU G1.6-G2.5-G4

Description

The new generation of UG gas meters combine a high accuracy, stability and reliability of measurement, in addition to a high security against fraud due to the patented index.

The measurement group have a high precision metrology, thanks to the original 3-wheel calibration system and the high quality of the materials used and a low pressure absorption. Cases can be supplied in galvanized and pressed steel (P max 0.5 bar) as well as in die-cast aluminum (Pmax 2 bar). The UG meters can be used for the precise measurement of natural, manufactured, propane and other not corrosive gases.

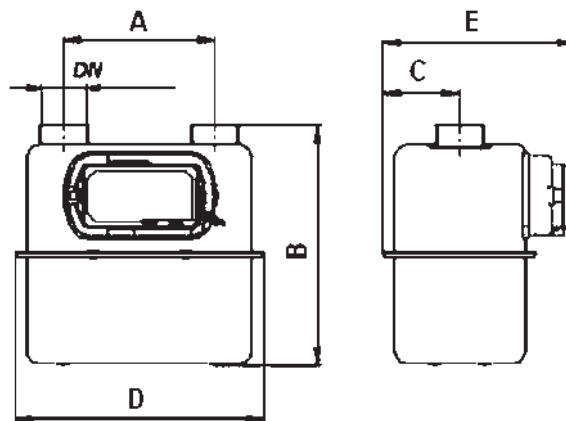
Standard features

- Compact design
- High measuring accuracy for a long time
- Special version for LPG (butane-propane)
- Operating pressure up to 2 bar (ALU)
- Tested up to 3 bar (ALU)
- CE-MID approved
- Slot for retrofit LF pulse generator
- Remote reading retrofit module

Maximum protection against fraud and tamper

- Patented anti-tamper index
- Backstop safety system
- Magnetic transmission (no leaks)

Dimensions



Model	Case	V cyclic dm ³	Connections DN	Flow m ³ /h		P _{max} bar	Weight Kg	Dimensions mm				
				Q _{min}	Q _{max}			A	B	C	D	E
G1.6	Steel	1,2	1 ¼" gas	0,016	2,5	0,5	1,7	110	205	70	200	161
G1.6	Aluminium	1,2	1 ¼" gas	0,016	2,5	2	1,9	110	210	75	210	175
G2.5	Steel	1,2	1 ¼" gas	0,025	4	0,5	1,7	110	205	70	200	161
G2.5	Aluminium	1,2	1 ¼" gas	0,025	4	2	1,9	110	210	75	210	175
G4	Steel	1,2	1 ¼" gas	0,040	6	0,5	1,7	110	205	70	200	161
G4	Aluminium	1,2	1 ¼" gas	0,040	6	2	1,9	110	210	75	210	175

Other fittings and Q_{min} on request.

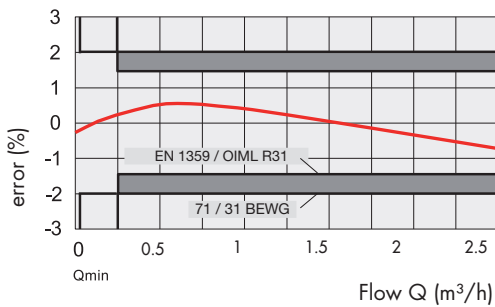
Technical data

Qmin	0,016 (G1.6) - 0,025 (G2.5) - 0,040 (G4) m ³ /h
Qmax	2,5 (G1.6) - 4 (G2.5) - 6 (G4) m ³ /h
Qstart	0,005 m ³ /h
Cyclic volume	1,2 dm ³
Max working pressure	2 bar (alu) - 0,5 bar (steel)
Temperature range	-25 °C ÷ +55°C
Index digits	99999,999 m ³
Approvals	CE-MID ; EN 1359 ; OIML R137 1&2:2012

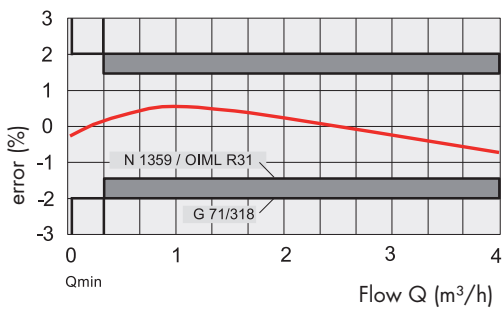
Typical error curve

The use of high quality materials and very high quality setting of each meter, make high stable the error curve during life time.

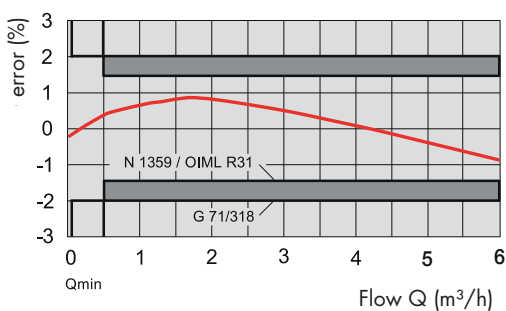
UG G 1.6 ALU UG G 1.6



UG G 2.5 ALU UG G 2.5

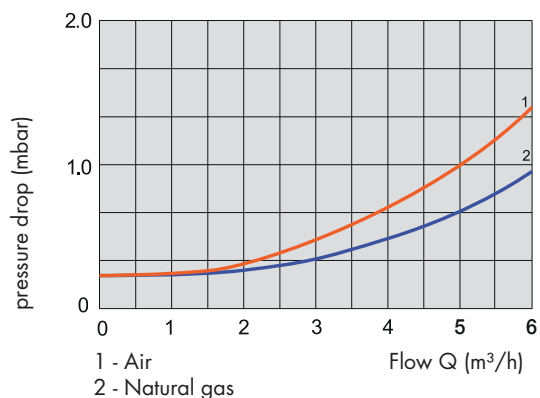
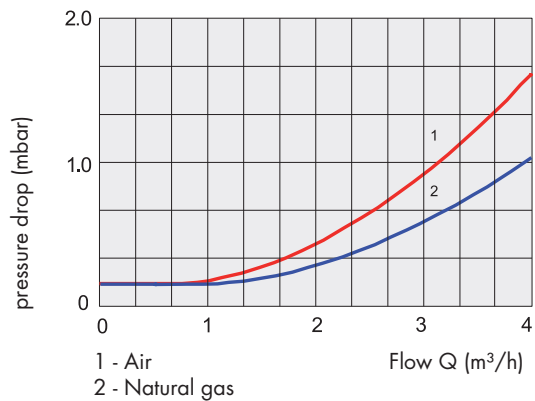
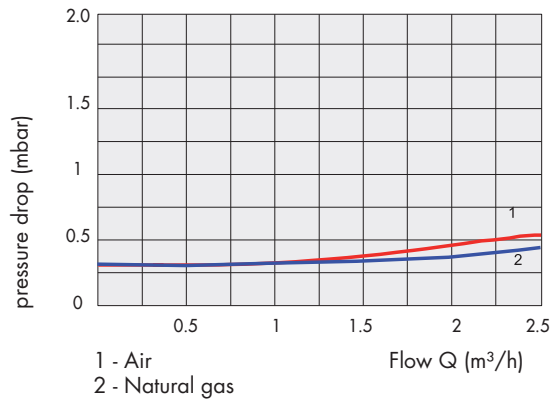


UG G 4 ALU UG G 4



Pressure loss curve

The precision machining of internal moving parts surface, minimize pressure losses and noise level.



Product range



Rotary piston gas meters



Turbine gas meters



Gas pressure regulators



Electronic volume correctors



Diaphragm gas meters



Smart meters

metrixitalia

Metrix Italia s.r.l.

Via Nona Strada, 53 - 35129 Padova (Italy)

Tel: +39 049 5349377 - Fax: +39 049 8076008

www.metrixitalia.it - E-mail: info@metrixitalia.it